

THE VARIETY OF LIFE

Q1) The diagram below is an **Evolutionary Tree**. Can you circle the correct meaning of “Evolution”?

A) the process that causes living things to change through time, leading to new variation and new species.

B) when all animals within one species die and no more exist on Earth.

C) a change in the instructions that tell our bodies how to work (our DNA).

Q2) Using the diagram, which species is the closest related to birds, and how do you know this?

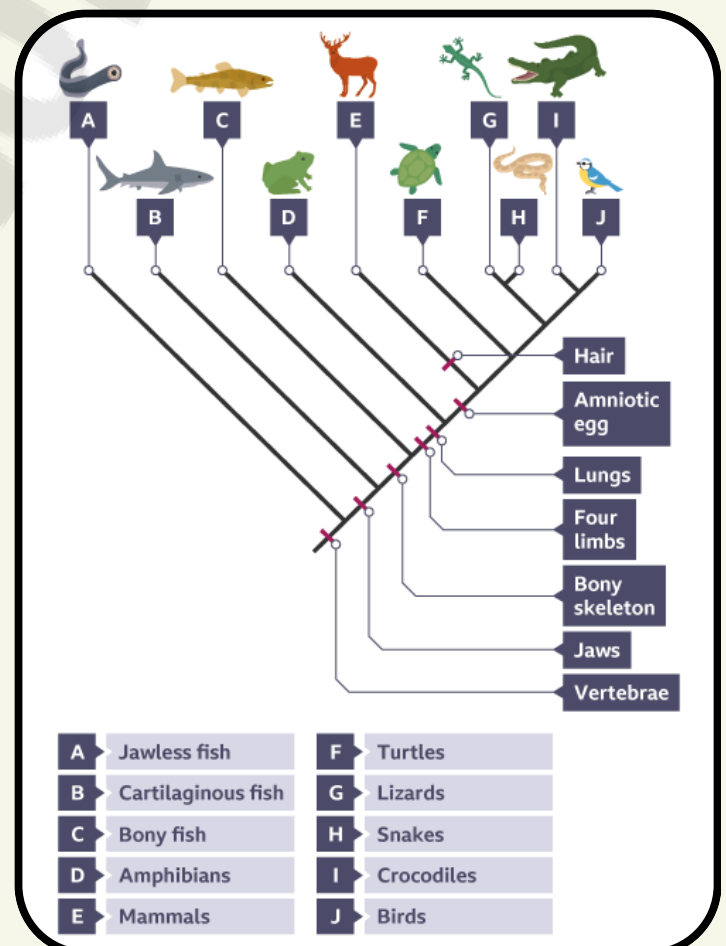
.....

.....

.....

Q3) Circle on the diagram all animals with lungs.

Q4) Think about your favourite animal. On the back of this worksheet, write down every way you can think of, that you are different from that animal. These are examples of variations.



THE VARIETY OF LIFE

Q1) The diagram below is an **Evolutionary Tree**. Can you circle the correct meaning of “Evolution”?

A) the process that causes living things to change through time, leading to new variation and new species.

B) when all animals within one species die and no more exist on Earth. **Extinction**

C) a change in the instructions that tell our bodies how to work (our DNA). **Mutation**

Q2) Using the animals on this diagram only , which species is the closest related to birds, and why?

Crocodiles, because they
are the closest on the
evolutionary tree to birds.

Q3) Circle on the diagram all animals with lungs.

Q4) Think about your favourite animal. On the back of this worksheet, write down every way you can think of, that you are different from that animal. These are examples of variations.

