

Adaptations to Habitat

Habitat means the type of place an animal likes to live

Here are some different habitats and some animals that live there. Can you match each animal to its habitat? Say one thing about the animal which makes it adapted for the habitat.



African Savanah



Rainforest



Desert



Tundra (cold)



Camel



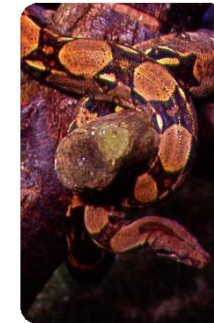
Cheetah



Goeldis Monkey



Reindeer



Boa Constrictor



Bearded Lizard
